

TECHNICAL DATA SHEET



FLOLOK

DESCRIPTION

Flolok is a reinforced drainage channel strategically positioned alongside the track to effectively manage water flow, ensuring it is directed away from the track rather than beneath it.

PACKAGING

Flolok units are securely packed upright in a cradle, with each cradle accommodating 80 units.

TECHNICAL DATA

SPECIFICATION	FLOLOK
Installed length	1500mm
Total length	1550mm
Width	400mm
Height	200mm
Weight	19 kg
Typical flow rate at 1:200	80 lt/sec

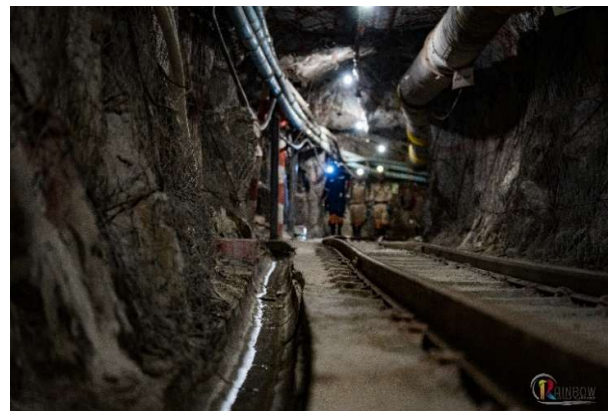
DESIGN FEATURES

- **Leakproof Design:** Features an interlocking joint system for complete water containment.
- **Lightweight Construction:** Reduces the risk of hand injuries during handling and installation.
- **Shovel-Friendly:** Designed to accommodate a standard mine shovel for ease of use.
- **Space-Efficient:** Easily nestable for optimized transport and storage.
- **Durable and Resistant:** Built to resist impact, heat, fire, and rodent damage.
- **Advanced Materials:** Manufactured from a cutting-edge cementitious composite reinforced with woven polypropylene and alkali-resistant glass fiber.
- **Strength and Flexibility:** The Flolok fiber-reinforced drain channel combines robustness and flexibility, ensuring resistance to breakage during handling, transport, and installation, while withstanding underground footwall pressure.



BENEFITS

- **Interlocking Lip:** Designed for effortless installation, including curved sections.
- **Enhanced Retention:** Prevents the loss of fines for improved durability.
- **Optimized Flow:** Smooth inner surface ensures superior water flow.
- **Reduced Blockages:** Minimizes the risk of obstructions, ensuring consistent performance.
- **Easy Maintenance:** Facilitates quick and hassle-free cleaning.



QUALITY ASSURANCE

Rainbow Mining Support (Pty) Ltd production and testing programs comply with all local (ISO 9001:2015) and international testing standards.

CUSTOMER SERVICE

For additional support options available at your area, contact our local offices.
www.rainbowms.co.za
010 448 4746